



Hobby Co2 Laser Cutting Machine

AE-X Series

SAFETY
LEVEL

AESTHETICS

COSTING

- ◆ Laser engraving machine operation interface is simple, supports PC and USB 2.0 connection, advanced LCD screen control panel, DSP offline control system.
- ◆ Chassis sealed design to ensure the safety of the processing environment, unique cover protection function, operators open laser engraving machine cover, the laser power will be suspended to protect the safety of operators.
- ◆ The precise positioning and visual working path of the laser beam are realized by red light indication, which is convenient for the operator to obtain the specific machining position.
- ◆ Two kinds of worktable can be selected, the processing of acrylic, wood and other hard materials, suitable for aluminum alloy blade worktable, leather, cloth and other soft materials, suitable for honeycomb worktable, keep the material as flat as possible to ensure the cutting effect.
- ◆ Motorized up-down platform is optional to allow customers adjust the height of the worktable through the operation of the Z axis to achieve thick material processing, the Z axis lifting function is essential when using autofocus and rotary axis tools.
- ◆ The chuck rotary platform is designed to engrave irregular objects, can be selected for cylinder engraving.
- ◆ Imported high precision linear guide rail, professional optical system, improve the quality of engraving, extend the machine life.
- ◆ Unique front and rear through design, special door for unlimited engraving material through.
- ◆ Freely define the engraving order, easy to realize all or part of one-time output, USB interface is used to transfer data, built-in large capacity memory, greatly improve the working speed and efficiency.

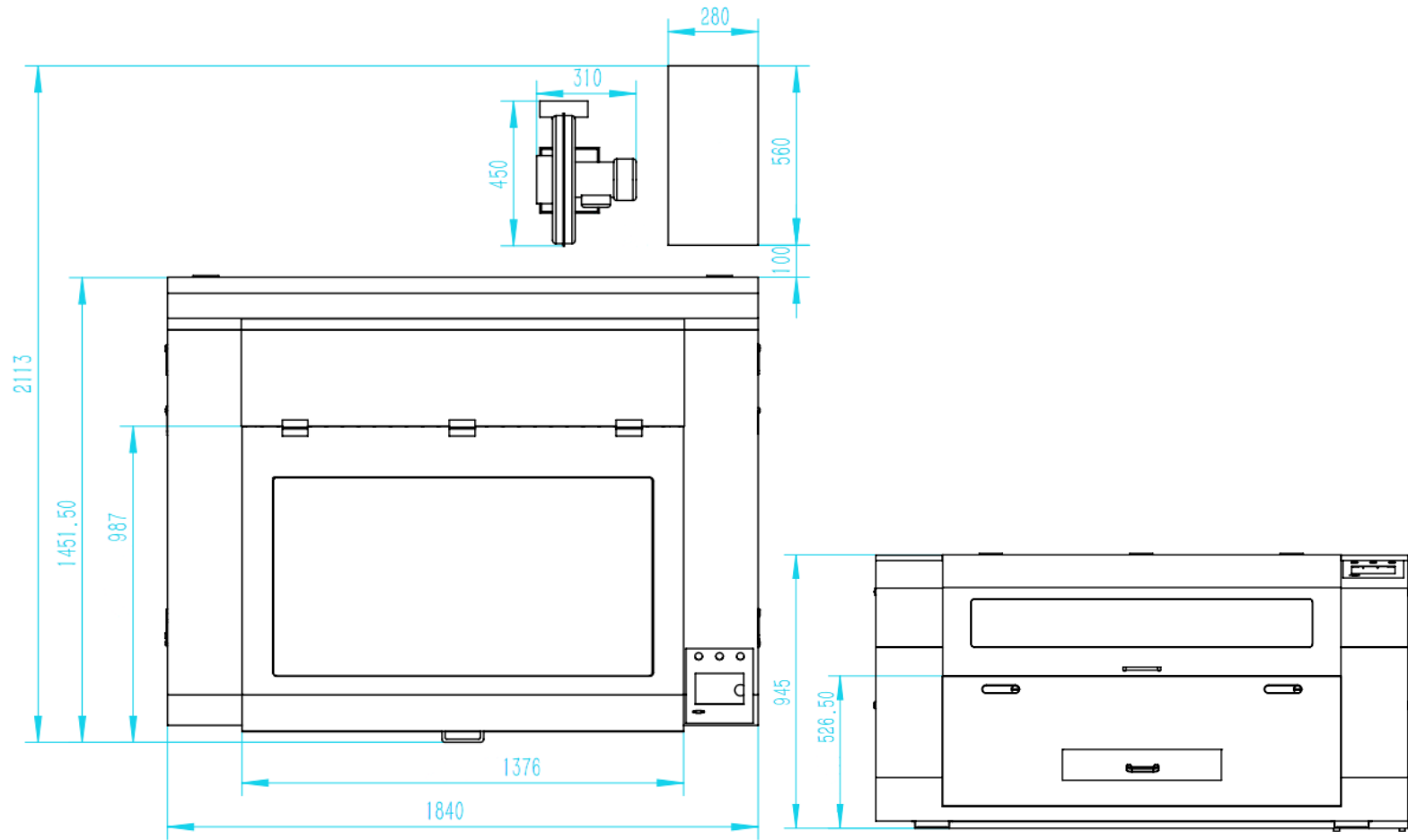
Components



Specifications

Model No.	AE-X Series
Laser Power	100W/130W/150W/180W
Laser Wavelength	10.64μm
Laser Type	Hermetic and Detached CO2 Laser Tube
Scanning Precision	4000DPI
Working Range	1300mm*900mm
Optional Range	600mm*900mm / 1600mm*1000mm
Min. Engraving Size	English Letter: 1.0mm*1.0mm
Dichromatic Cutting	Up to 256 colors
Engraving Speed	0-60000mm/min
Cutting Speed	0-50000mm/min
Control System	Leetro System/Ruida System
Control Software	Laser cut/Laser work
Repeatability Accuracy	±0.01mm
Cooling Type	Circulating Water Cooling
Graphic Format Supported	DST, PLT, BMP, DXF, DWG, AI, JPG, GIF, PGN, TIF, LAS, etc.
Compatible Software	TAJIMA, CORELDRAW, PHOTOSHOP, AUTOCAD, ARTCUT, etc.
Electricity Supply	110V/220V±10% 50/60Hz
Unit Power	1.2kw
Working Environment	Clean or Dust free
Operating Temperature	0°C-45°C
Working Humidity	5%-95% no condensed water
Laser Module Life	15000hours
Gross Weight	430kg

Layout



Related Components



Hiwin Guide Rail



Stepper Motor Driver



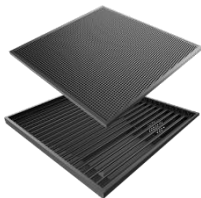
Autofocus System



Optical Lens



Electric Lift Platform



Machine Worktables

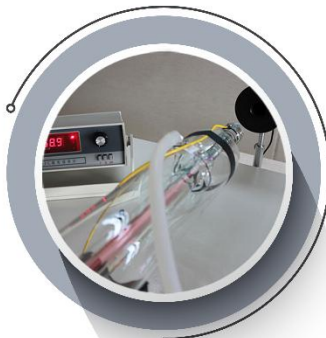


Omron Limit Switch



Co2 Laser Tube

Quality Control



Laser Power Test

10% above the rated power



Mechanical Inspection

Eliminate all defective items



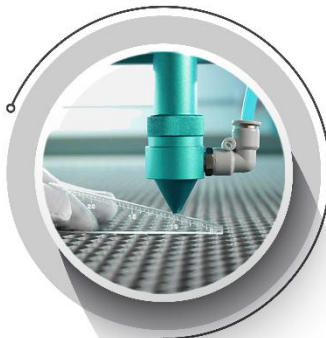
Chassis Flatness Test

Four corners deviation less than 0.5mm



Guide Rail Vertical Degree

Deviation less than 0.4mm



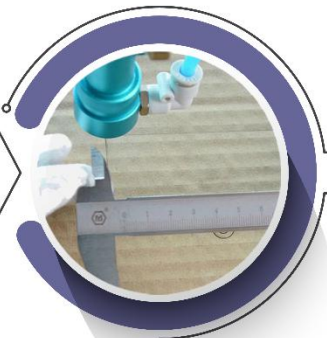
Platform Flatness

Four corners deviation less than 0.5mm



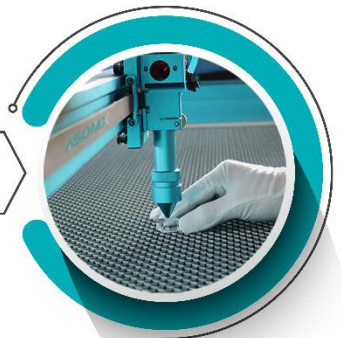
Working Power Test

Four corners deviation less than 3%



Cutting Accuracy

100*100mm cutting less than 0.1mm



Laser Beam Vertical Degree

10mm acrylic cutting edge be vertical

Samples

