

Split Type Co2 Laser Engraving Machine

AE-P Series

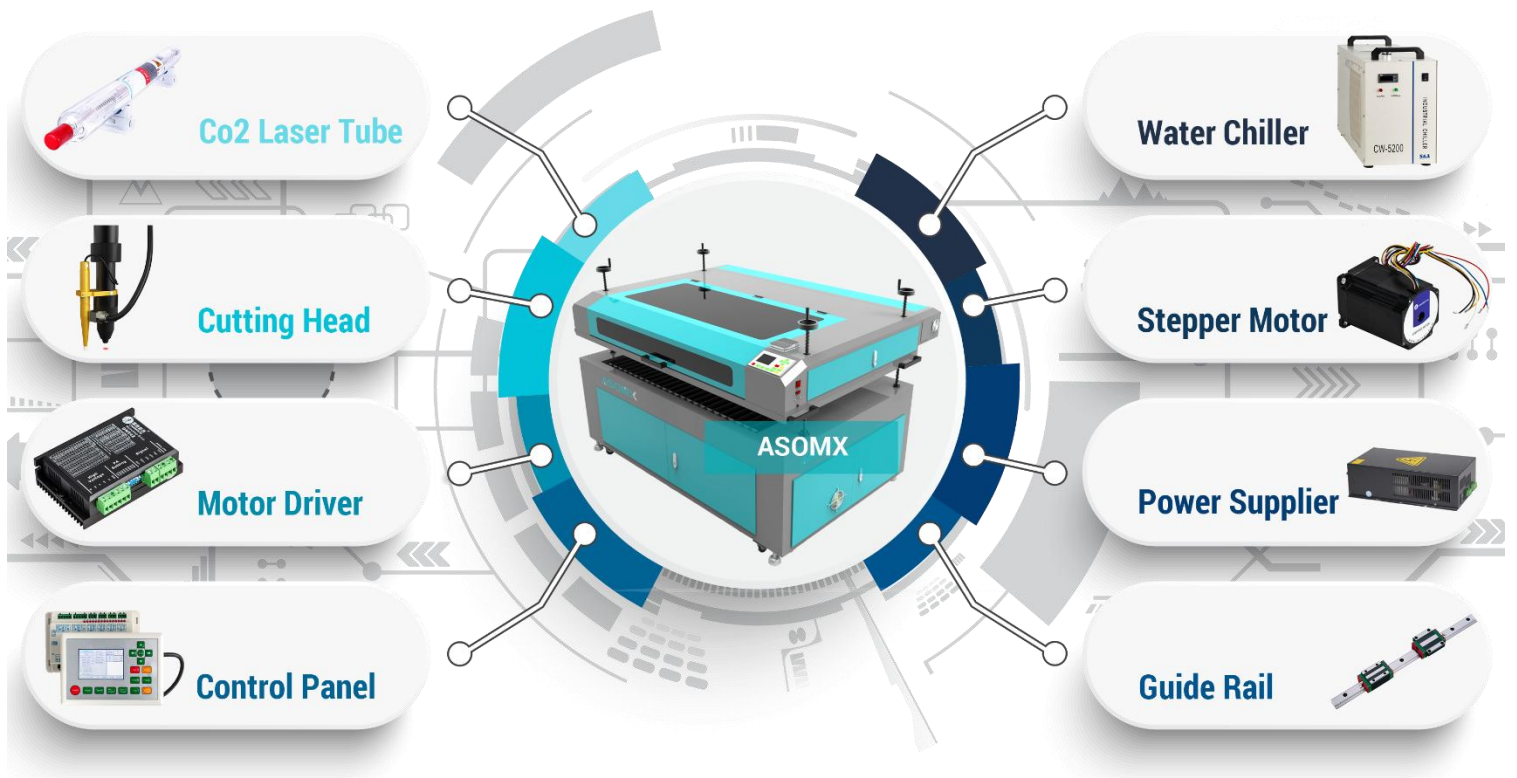
SAFETY
LEVEL

AESTHETICS

COSTING

- ◆ Two-part split design, easy to operate, avoid heavy lifting and loading. This design also allows the machine to pass through the small door.
- ◆ For customers to engrave different thickness materials to provide greater convenience. Widely used in stone engraving and other industries.
- ◆ Unique front and rear through design, unique door for unlimited material engraving through.
- ◆ Professional honeycomb or blade work table, to meet the needs of diversified laser processing.
- ◆ Water cooling system with alarm protection function protects the water circulation from power failure.
- ◆ Imported focus lens and reflector, the best quality laser tube made in China, 15000 hours service life.
- ◆ Electric lift Z axis is optional, the machine table can be driven in Z direction. When you lower the machine table, you will get more work space and put heavy items or materials on the machine table.
- ◆ Support hot swap and instantaneous data transmission, without computer resources to achieve high efficiency, LCD control panel, friendly man-machine interface, greatly increased the speed and efficiency of work.
- ◆ The upper body of the machine can be removed and placed on heavy objects such as stone and on a thicker material for laser engraving.

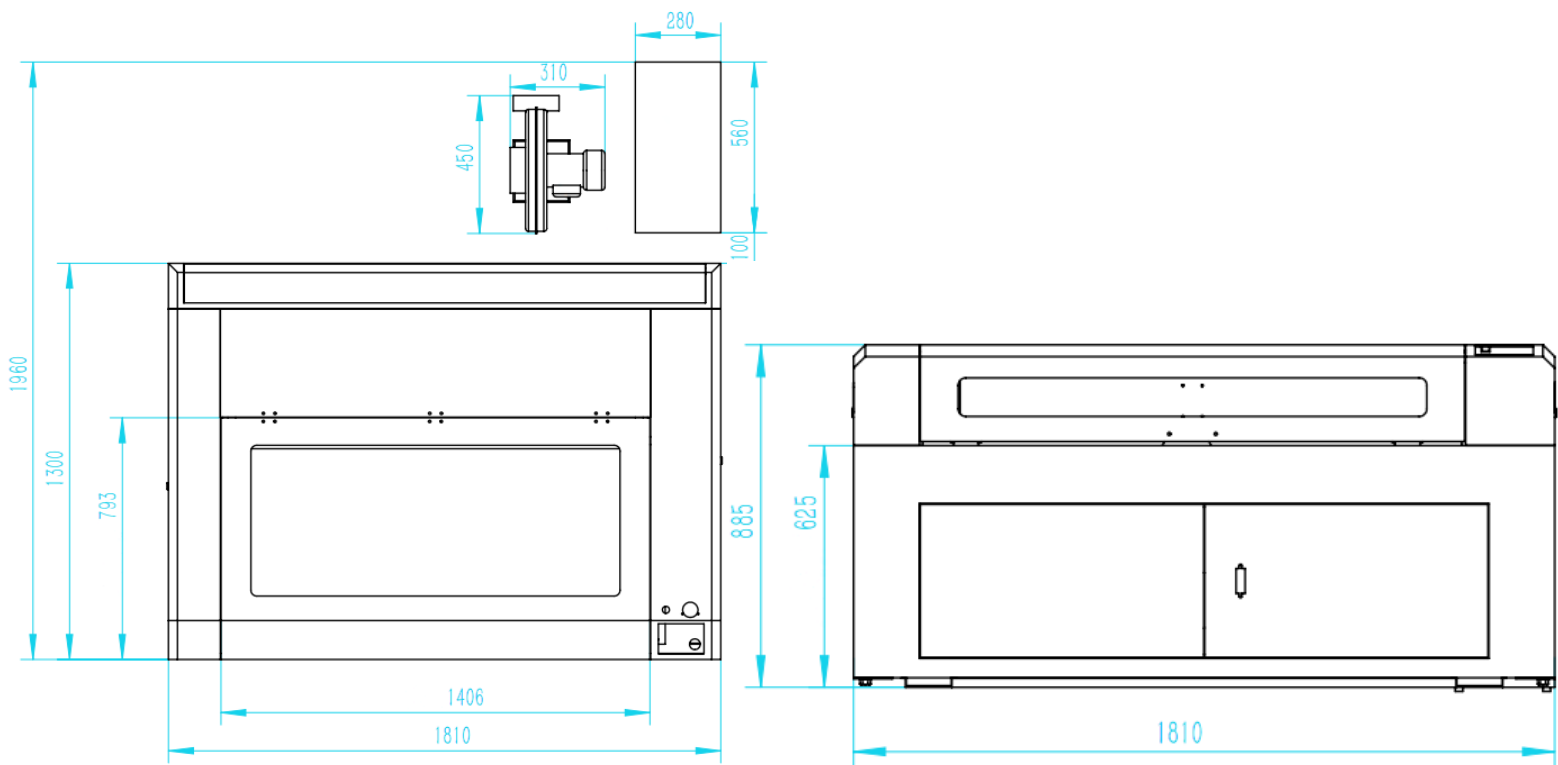
Components



Specifications

Model No.	AE-P Series
Laser Power	80W/100W/130W/150W
Laser Wavelength	10.64μm
Laser Type	Hermetic and Detached CO2 Laser Tube
Scanning Precision	4000DPI
Working Range	1300mm*900mm
Optional Range	600mm*900mm / 1600mm*1000mm
Min. Engraving Size	English Letter: 1.0mm*1.0mm
Dichromatic Cutting	Up to 256 colors
Engraving Speed	0-60000mm/min
Cutting Speed	0-50000mm/min
Control System	Leetro System/Ruida System
Control Software	Laser cut/Laser work
Repeatability Accuracy	±0.01mm
Cooling Type	Circulating Water Cooling
Graphic Format Supported	DST, PLT, BMP, DXF, DWG, AI, JPG, GIF, PGN, TIF, LAS, etc.
Compatible Software	TAJIMA, CORELDRAW, PHOTOSHOP, AUTOCAD, ARTCUT, etc.
Electricity Supply	110V/220V±10% 50/60Hz
Unit Power	1.0kw
Working Environment	Clean or Dust free
Operating Temperature	0°C-45°C
Working Humidity	5%-95% no condensed water
Laser Module Life	15000hours
Gross Weight	420kg

Layout



Related Components



Hiwin Guide Rail



Stepper Motor Driver



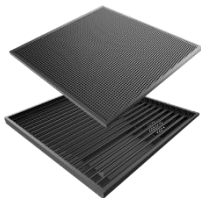
Autofocus System



Optical Lens



Electric Lift Platform



Machine Worktables

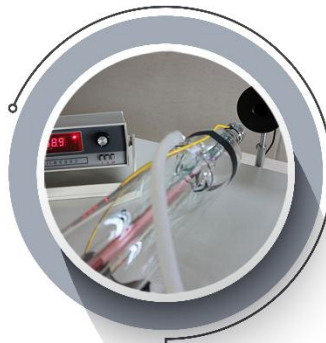


Omron Limit Switch



Co2 Laser Tube

Quality Control



Laser Power Test

10% above the rated power



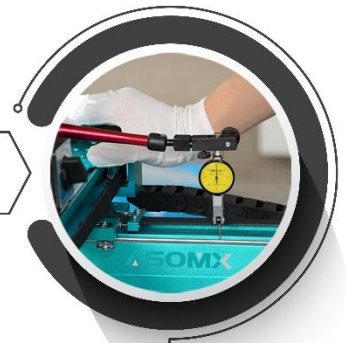
Mechanical Inspection

Eliminate all defective items



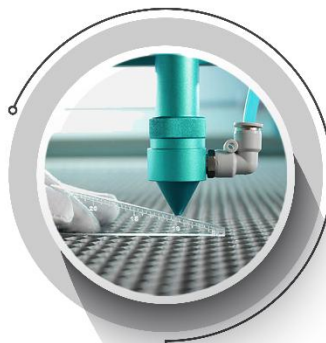
Chassis Flatness Test

Four corners deviation less than 0.5mm



Guide Rail Vertical Degree

Deviation less than 0.4mm



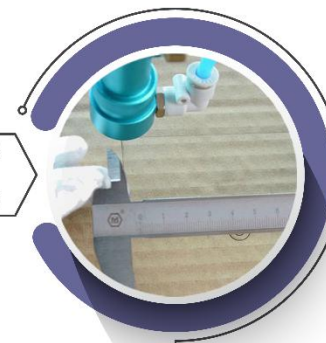
Platform Flatness

Four corners deviation less than 0.5mm



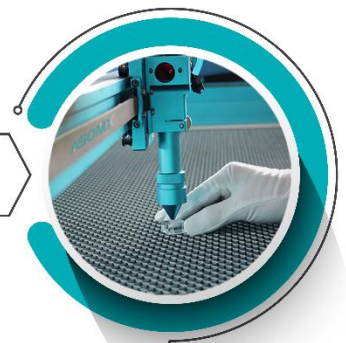
Working Power Test

Four corners deviation less than 3%



Cutting Accuracy

100*100mm cutting less than 0.1mm



Laser Beam Vertical Degree

10mm acrylic cutting edge be vertical

Samples

