

Metal & Non-Metal Co2 Laser Cutting Machine

AE-M Series

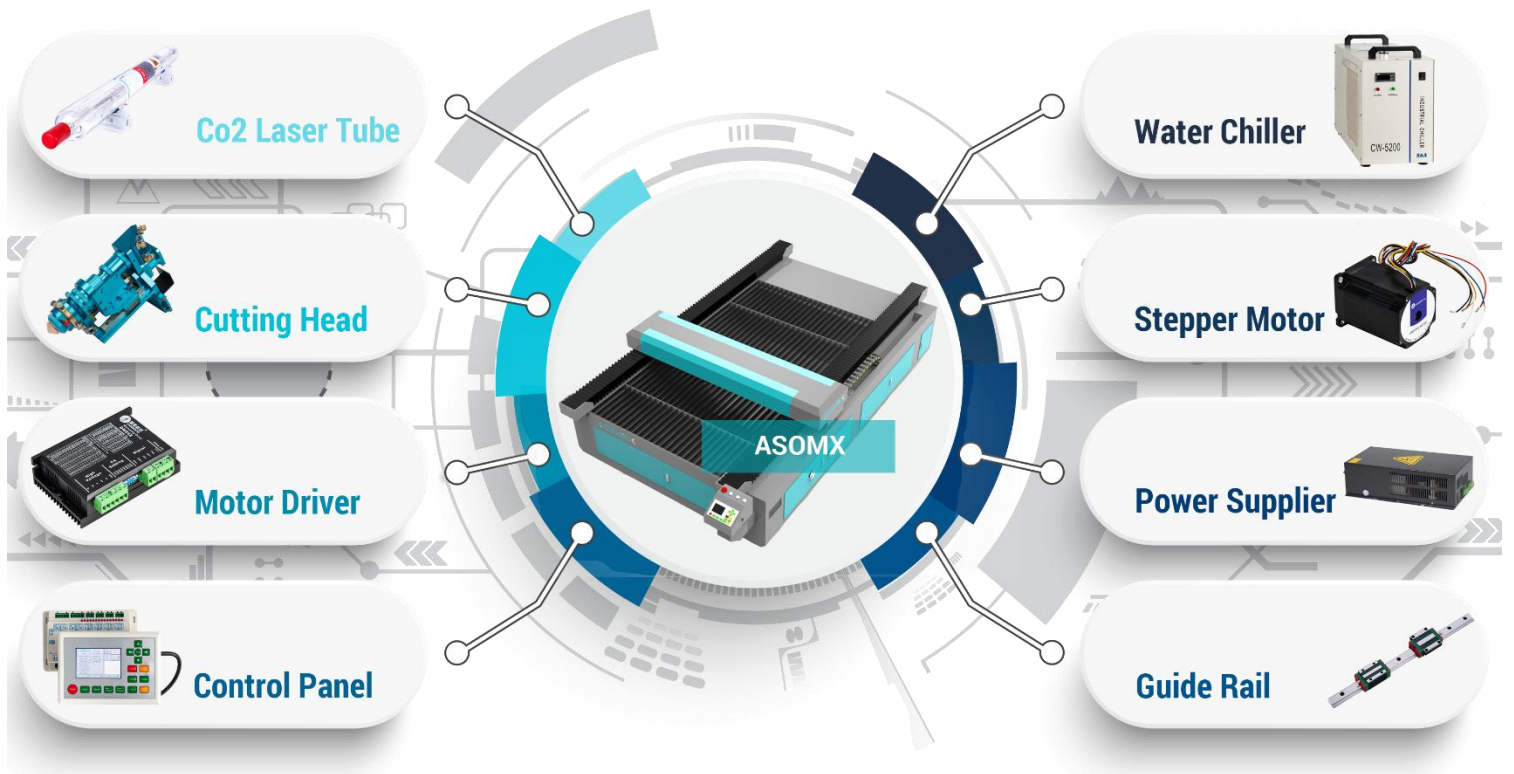
SAFETY
LEVEL

AESTHETICS

COSTING

- ◆ The cutting section is excellent, the precision is high, the stability is good, satisfies the precision part processing request.
- ◆ Capable of cutting both non-metal and metal, able to cut stainless steel, carbon steel, also can cut acrylic, wood, MDF, PVC board, paper, fabric, etc.
- ◆ Mechanical follow-up cutting head system, the cutting head always follows the material, keeps the cutting point position unchanged, automatically adjusts the height along the metal plate surface.
- ◆ Precision ball screw drive mechanism and optimized CNC system control, greatly improve the response speed and cutting accuracy, extend the service life.
- ◆ Stable optical design, with high-power industrial water chiller cooling CO2 laser tube, to ensure the laser output stability and the laser power of large-format cutting surface is the same.
- ◆ Open blade worktable is made of special treated material, which is not easy to wear and tear, suitable for all kinds of hard materials.
- ◆ Adopts Machine tool-class chassis to ensure the stability and accuracy of high-speed machining.
- ◆ Professional cutting software is designed for metal and non-metal cutting, high compatibility, support most computer operating systems.
- ◆ Solenoid valve allows gas blowing only during cutting to avoid gas wasting. The valve is particularly important for oxygen assistance during metal cutting.

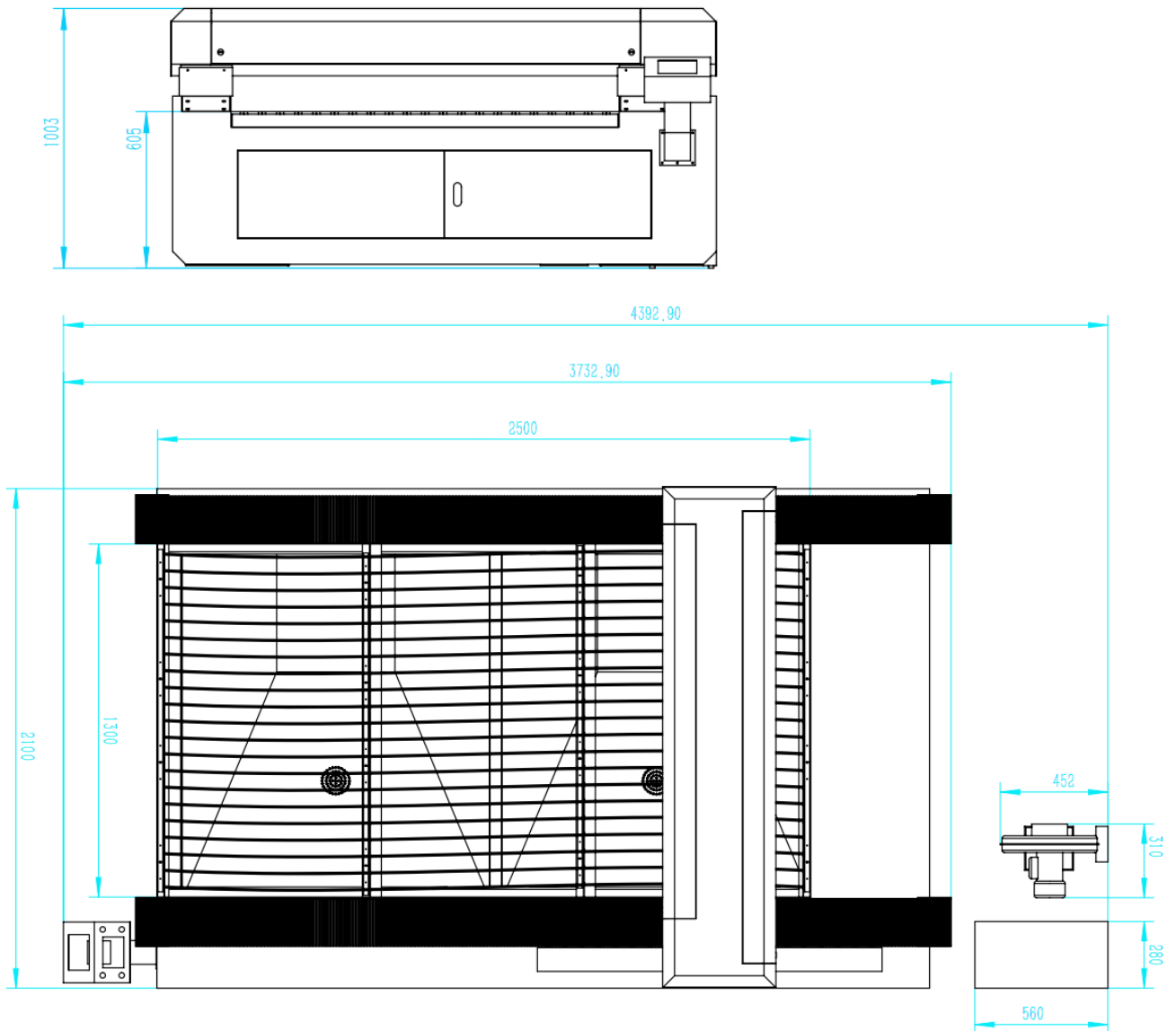
Components



Specifications

Model No.	AE-M Series
Laser Power	150W/180W/280W/300W
Laser Wavelength	10.64μm
Laser Type	Hermetic and Detached CO2 Laser Tube
Scanning Precision	4000DPI
Working Range	1300mm*2500mm
Optional Range	1300mm*900mm / 1600mm*1000mm
Min. Engraving Size	English Letter: 1.0mm*1.0mm
Dichromatic Cutting	Up to 256 colors
Engraving Speed	0-60000mm/min
Cutting Speed	0-50000mm/min
Control System	Leetro System/Ruida System
Control Software	Laser cut/Laser work
Repeatability Accuracy	±0.01mm
Cooling Type	Circulating Water Cooling
Graphic Format Supported	DST, PLT, BMP, DXF, DWG, AI, JPG, GIF, PGN, TIF, LAS, etc.
Compatible Software	TAJIMA, CORELDRAW, PHOTOSHOP, AUTOCAD, ARTCUT, etc.
Electricity Supply	110V/220V±10% 50/60Hz
Unit Power	2.2kw
Working Environment	Clean or Dust free
Operating Temperature	0°C-45°C
Working Humidity	5%-95% no condensed water
Laser Module Life	15000hours
Gross Weight	700kg

Layout



Related Components



Hiwin Guide Rail



Stepper Motor Driver



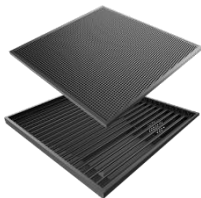
Autofocus System



Optical Lens



Electric Lift Platform



Machine Worktables

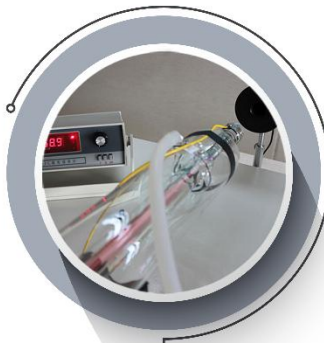


Omron Limit Switch



Co2 Laser Tube

Quality Control



Laser Power Test

10% above the rated power



Mechanical Inspection

Eliminate all defective items



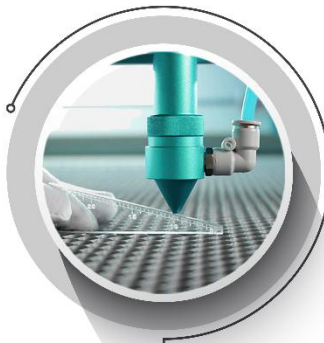
Chassis Flatness Test

Four corners deviation less than 0.5mm



Guide Rail Vertical Degree

Deviation less than 0.4mm



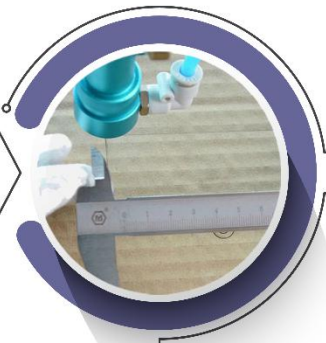
Platform Flatness

Four corners deviation less than 0.5mm



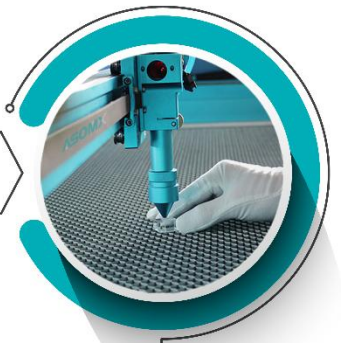
Working Power Test

Four corners deviation less than 3%



Cutting Accuracy

100*100mm cutting less than 0.1mm



Laser Beam Vertical Degree

10mm acrylic cutting edge be vertical

Samples

