

Co2 Laser Engraving & Cutting Machine

AE-H Series

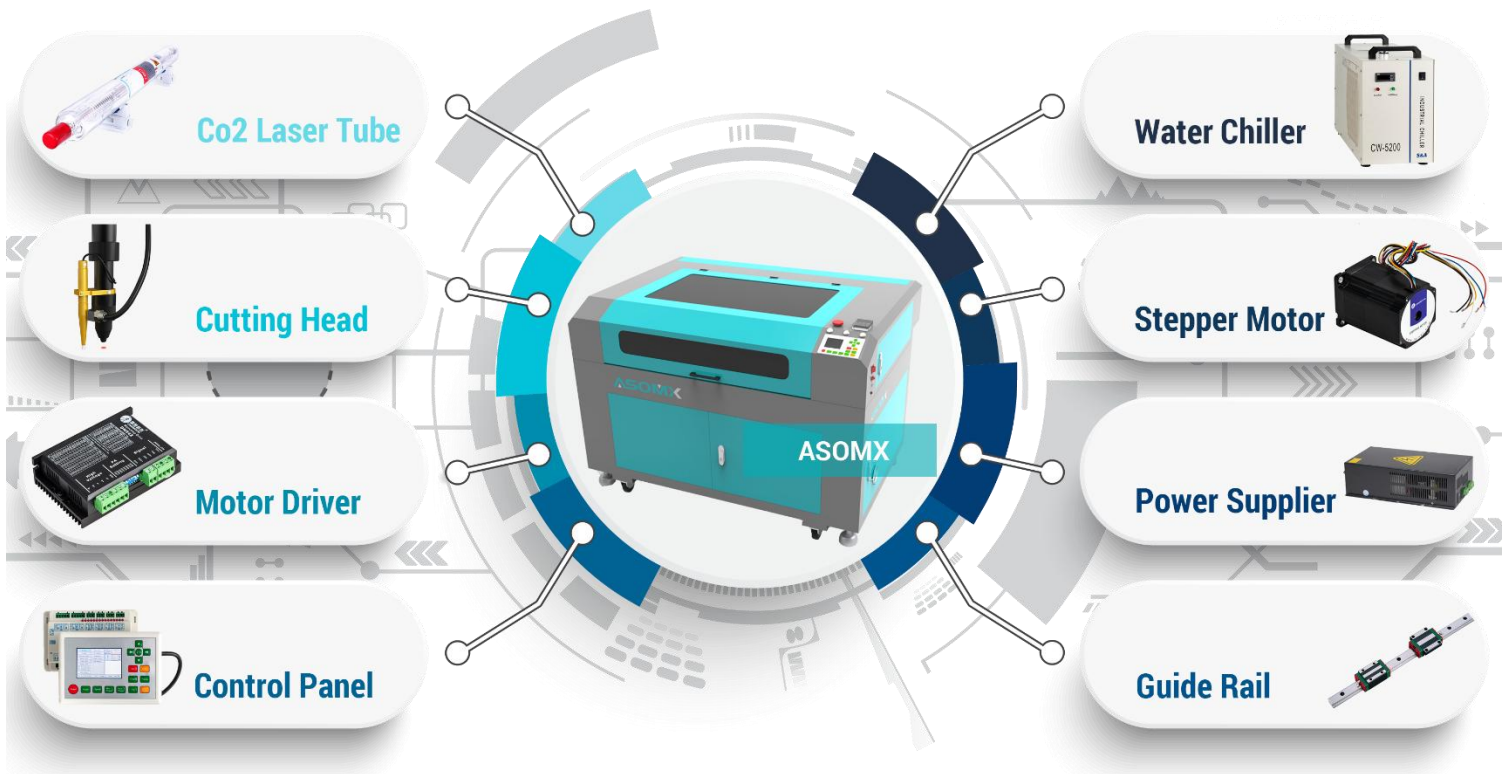
SAFETY
LEVEL

AESTHETICS

COSTING

- ◆ Professional honeycomb or blade worktable to meet the needs of diversified laser processing.
- ◆ Water cooling system with alarm protection, with temperature display cooling device to avoid overheating, protect the water cycle from electricity-off.
- ◆ Imported focusing lens and reflector, finer laser spot, better cutting ability, higher reflectivity, higher brightness, higher cutting efficiency, more stable cutting.
- ◆ High-speed step subdivision drive control, digital timing, analog quantum control laser power, small error, high repetition accuracy.
- ◆ The red light pointer achieves an accurate position without the laser.
- ◆ Imported ball screw, high speed, high precision, laser head smooth movement, high laser beam reflection accuracy.
- ◆ High precision die casting profiles are composed of high strength and high stability mechanical structure.
- ◆ High-efficiency laser power supply, using a new high-voltage switching mode, PWM main control technology, more stable performance.
- ◆ High-tech product composed of laser engraving proprietary software, automatic control system and precision control workbench.

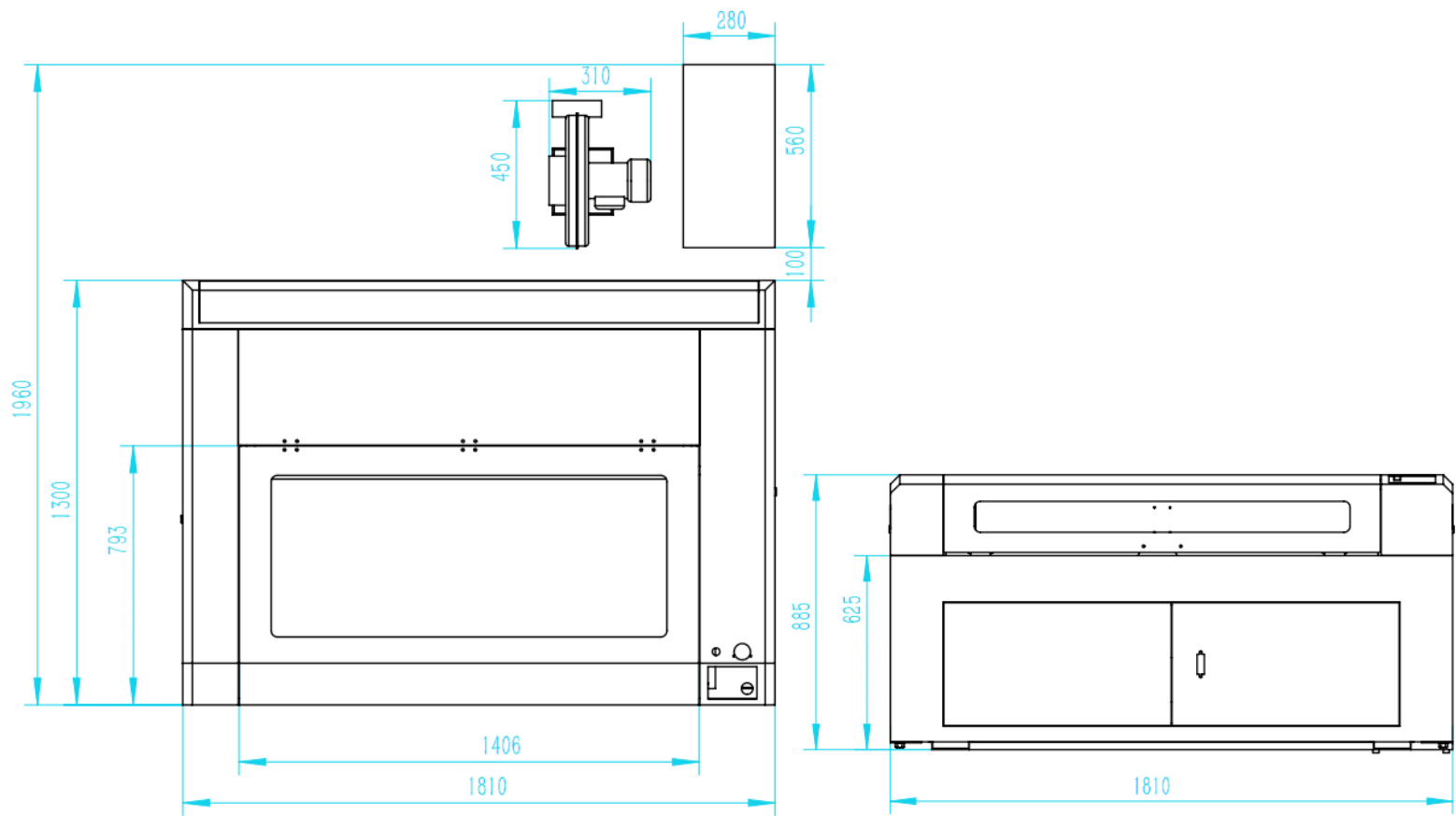
Components



Specifications

Model No.	AE-H Series
Laser Power	80W/100W/130W/150W
Laser Wavelength	10.64μm
Laser Type	Hermetic and Detached CO2 Laser Tube
Scanning Precision	4000DPI
Working Range	1300mm*900mm
Optional Range	600mm*900mm / 1600mm*1000mm
Min. Engraving Size	English Letter: 1.0mm*1.0mm
Dichromatic Cutting	Up to 256 colors
Engraving Speed	0-60000mm/min
Cutting Speed	0-50000mm/min
Control System	Leetro System/Ruida System
Control Software	Laser cut/Laser work
Repeatability Accuracy	±0.01mm
Cooling Type	Circulating Water Cooling
Graphic Format Supported	DST, PLT, BMP, DXF, DWG, AI, JPG, GIF, PGN, TIF, LAS, etc.
Compatible Software	TAJIMA, CORELDRAW, PHOTOSHOP, AUTOCAD, ARTCUT, etc.
Electricity Supply	110V/220V±10% 50/60Hz
Unit Power	1.2kw
Working Environment	Clean or Dust free
Operating Temperature	0°C-45°C
Working Humidity	5%-95% no condensed water
Laser Module Life	15000hours
Gross Weight	400kg

Layout



Related Components



Hiwin Guide Rail



Stepper Motor Driver



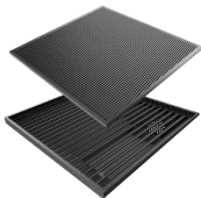
Autofocus System



Optical Lens



Electric Lift Platform



Machine Worktables

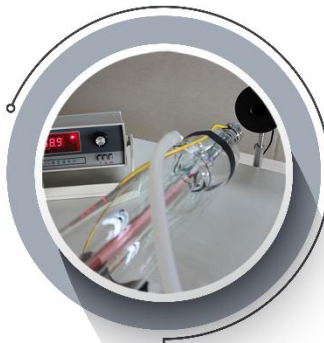


Omron Limit Switch



Co2 Laser Tube

Quality Control



Laser Power Test

10% above the rated power



Mechanical Inspection

Eliminate all defective items



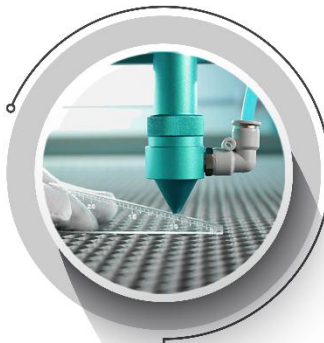
Chassis Flatness Test

Four corners deviation less than 0.5mm



Guide Rail Vertical Degree

Deviation less than 0.4mm



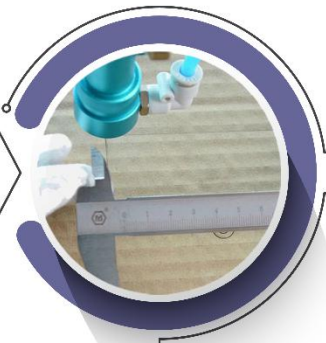
Platform Flatness

Four corners deviation less than 0.5mm



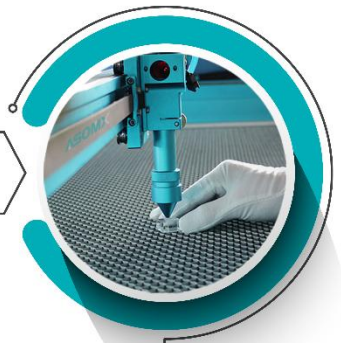
Working Power Test

Four corners deviation less than 3%



Cutting Accuracy

100*100mm cutting less than 0.1mm



Laser Beam Vertical Degree

10mm acrylic cutting edge be vertical

Samples

