



## Tabletop Co2 Laser Engraver

AE-D Series



- ◆ Professional design and writing the software of engraving and cutting, high compatibility, support most computer operating systems.
- ◆ Stable quality, full cutting application, low investment and operation cost, low maintenance cost.
- ◆ Non-contact height adjusting configuration, able to cut off almost all materials at the lowest cost.
- ◆ Blade type and honeycomb type double working platform can meet the cutting and engraving requirements of various products.
- ◆ High precision equilibrium linear guide rail, ensure precision machining effect.
- ◆ Imported molybdenum-based lens makes the laser spot smaller and the cutting force stronger.
- ◆ Advanced DSP control system, professional motion control chip, with continuous high-speed curve cutting and the shortest path selection function, greatly improve your work efficiency.
- ◆ Humanized, modern appearance reflects the consistent humanized design concept, which makes the operation and maintenance quite convenient.
- ◆ Red Dot positioning system as a standard configuration, contributing to a simple and precise working position.

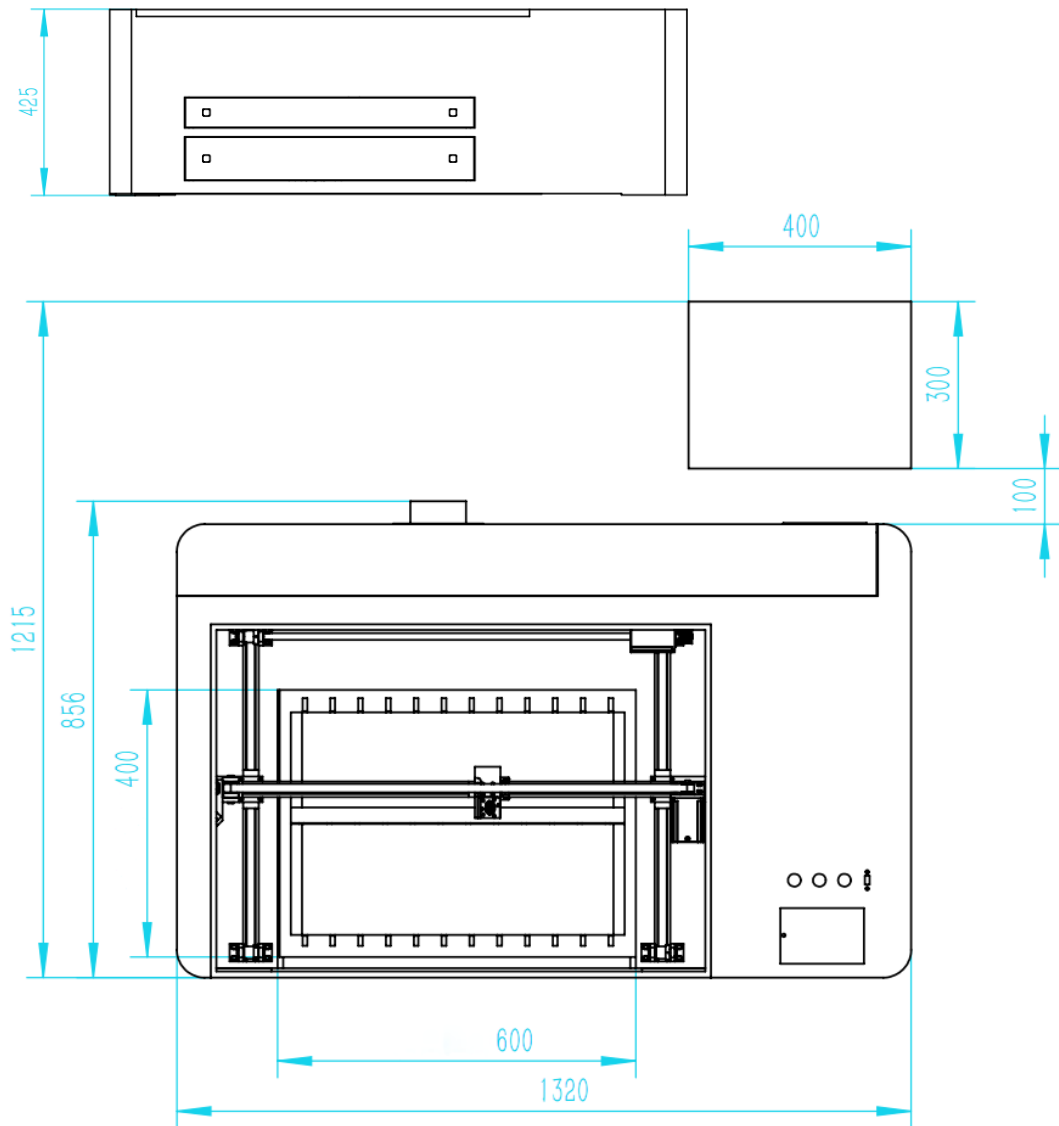
## Components



## Specifications

Model No.	AE-D Series
Laser Power	60W/80W
Laser Wavelength	10.64μm
Laser Type	Hermetic and Detached CO2 Laser Tube
Scanning Precision	4000DPI
Working Range	600mm*400mm
Optional Range	400mm*300mm
Min. Engraving Size	English Letter: 1.0mm*1.0mm
Dichromatic Cutting	Up to 256 colors
Engraving Speed	0-50000mm/min
Cutting Speed	0-30000mm/min
Control System	Leetro System/Ruida System
Control Software	Laser cut/Laser work
Repeatability Accuracy	±0.01mm
Cooling Type	Circulating Water Cooling
Graphic Format Supported	DST, PLT, BMP, DXF, DWG, AI, JPG, GIF, PGN, TIF, LAS, etc.
Compatible Software	TAJIMA, CORELDRAW, PHOTOSHOP, AUTOCAD, ARTCUT, etc.
Electricity Supply	110V/220V±10% 50/60Hz
Unit Power	0.5kw
Working Environment	Clean or Dust free
Operating Temperature	0°C-45°C
Working Humidity	5%-95% no condensed water
Laser Module Life	10000hours
Gross Weight	120kg

# Layout



# Related Components



Hiwin Guide Rail



Stepper Motor Driver



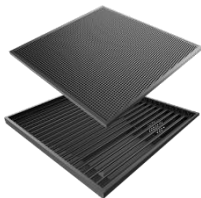
Autofocus System



Optical Lens



Electric Lift Platform



Machine Worktables



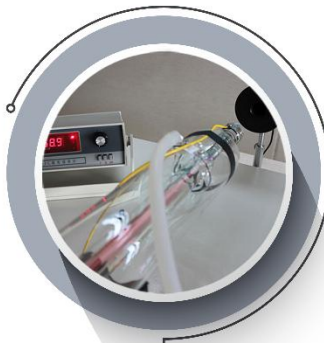
Omron Limit Switch



Co2 Laser Tube



# Quality Control



## Laser Power Test

10% above the rated power



## Mechanical Inspection

Eliminate all defective items



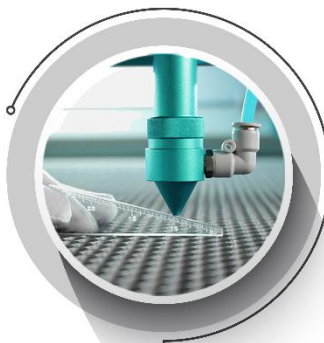
## Chassis Flatness Test

Four corners deviation less than 0.5mm



## Guide Rail Vertical Degree

Deviation less than 0.4mm



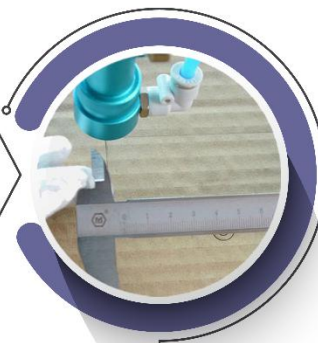
## Platform Flatness

Four corners deviation less than 0.5mm



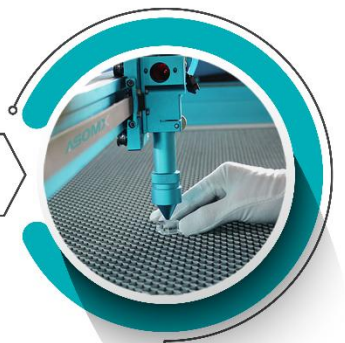
## Working Power Test

Four corners deviation less than 3%



## Cutting Accuracy

100\*100mm cutting less than 0.1mm



## Laser Beam Vertical Degree

10mm acrylic cutting edge be vertical

# Samples

